



Porotherm Application Guide
Topic: Best Practices of
Door & Window Installation

Step:1
Align the door with proper line and level



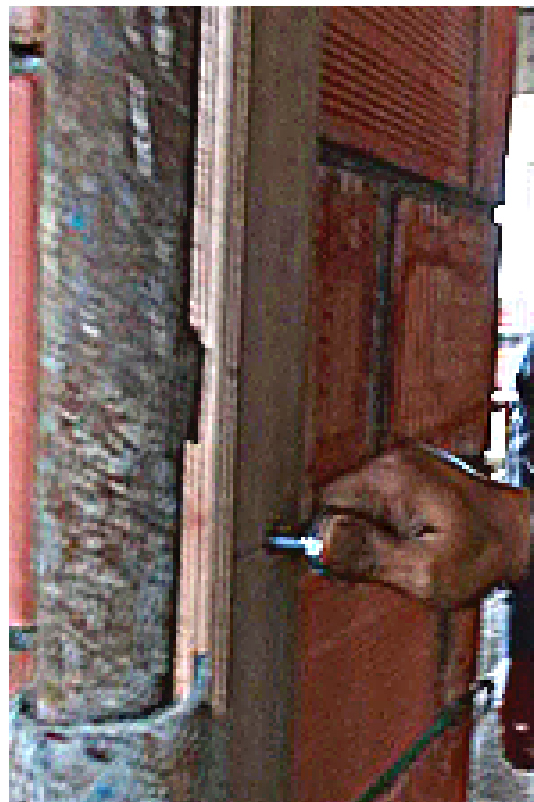
Step: 2
Drill a suitable hole as per the anchored size



Step: 3
Install the ancor



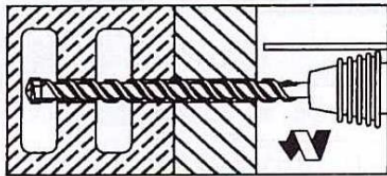
Step: 4
Install the anchor





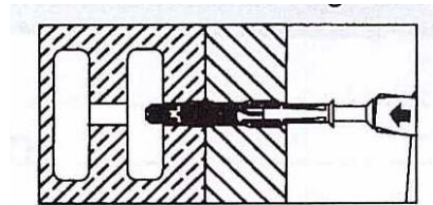
Fixing Procedure

Step 1



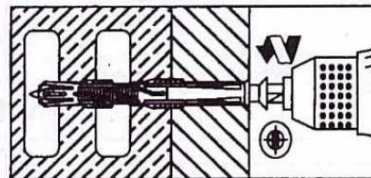
Drill hole with drill bit

Step 2



Install anchor sleeve

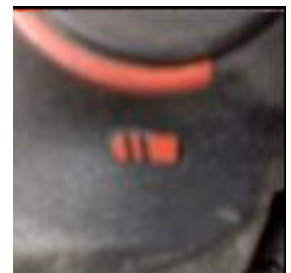
Step 3



Drive screw into anchor with torque

Note:

- Use drilling machine in rotary mode only
- Drill bits to be used as per the chosen anchor specification/ size
- Do not hammer the anchor for final installation
- Metal/Mechanical anchors are strictly avoided in Porotherm Walls
- Use of plastic sleeve anchors are recommended



Rotary mode



No mechanical anchor